

## OUR MISSION

Through  
compassionate service,  
we help people  
live meaningful  
and independent lives.

## OUR VISION

To become known for  
excellence in all we do.

## CORE VALUES

Stewardship  
Acceptance  
Dignity  
Care for the disadvantaged

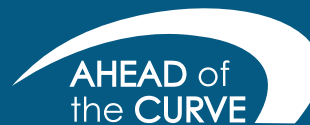


## CONTACT US

**CSSW Main Building**  
4925 Packard Street  
Ann Arbor, MI 48108  
Phone: 734-971-9781  
Fax: 734-971-2730

**CSSW Food Pantry**  
Northside Community Center  
815 Taylor Street  
Ann Arbor, MI 48105  
Phone and fax: 734-662-4462

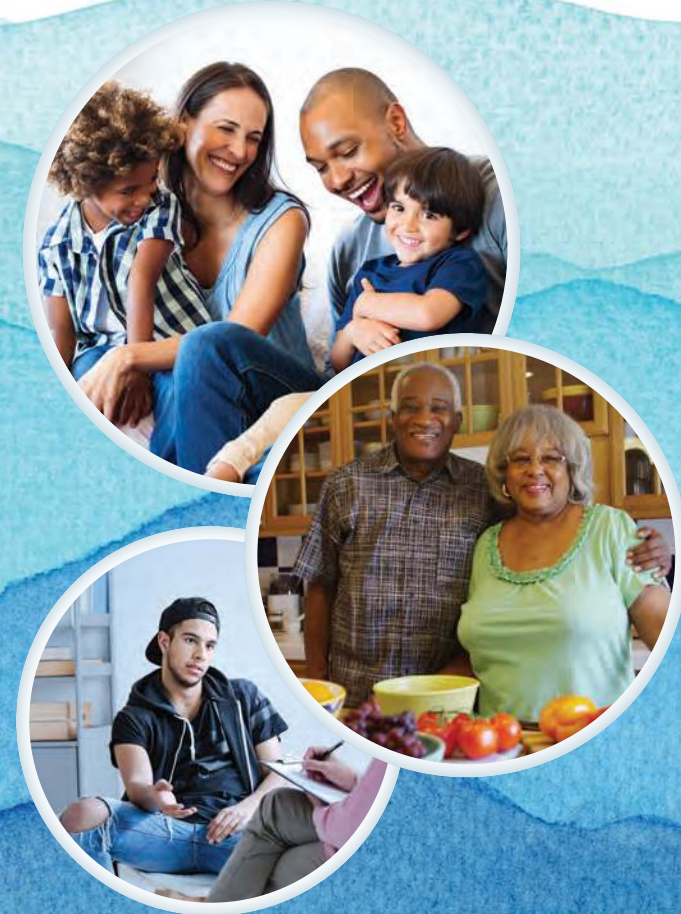
**Washtenaw Child Advocacy Center**  
555 Towner Street  
Ypsilanti, MI 48197  
Phone: 734-544-2925



A Program of Catholic Social Services

[www.getaheadwashtenaw.org](http://www.getaheadwashtenaw.org)

For more information visit our website:  
[www.csswashtenaw.org](http://www.csswashtenaw.org)



*Through compassionate service,  
we help people live meaningful  
and independent lives.*

# ABOUT US

Founded in 1959, Catholic Social Services of Washtenaw County (CSSW) has more than 60 years of foundational experience in providing programs in the areas of Behavioral Health Services, Family and Children Services and Senior Services. Our fundamental purpose is to provide community members a pathway to independence and a meaningful life.

We join with our neighbors and community partners to create a compassionate society where all are valued, honored and can thrive. Our work provides services and programming to close to 10,000 people annually.

Annual contributions are critical in sustaining and enhancing the programs offered by CSSW. Donor support is vital to providing the comprehensive and meaningful services that will make a real difference in the lives of our neighbors in need.

For more information or to donate, please visit: [www.csswashtenaw.org](http://www.csswashtenaw.org).

*“The mission of Catholic Charities is the work of the Catholic Church, to share the love of Christ by performing the corporal and spiritual works of mercy.”*



## PROGRAMS

### Behavioral Health Services

- Counseling: Individual, Group, Children & Family Therapy
- Domestic Violence Intervention Services
- Marriage Preparation
- Offender Success
- Substance Use Disorder

### Family & Children

- Family Time (*Supervised Parent Visitation*)
- Food Pantry
- Foster Care and Waiting Child Adoption
- Newborn Adoption Services
- Nurturing Families
- Pregnancy Counseling
- Washtenaw Child Advocacy Center

### Senior Services

- Ahead of the Curve: Resource Guide for Seniors and Caregivers
- Grandparents as Parents
- Home Maintenance and Safety Services
- Medicare/Medicaid Assistance
- Resource Advocacy
- Retired and Senior Volunteer Program
- Volunteer Caregiver Respite